

NAVAL MESSAGE.

Revised
December, 1935.

S. 1320b.

For use in
Signal
Department
only

Originators Instructions:
(Indication of Priority,
Intercept Group, etc.)

Codress/Plaindress

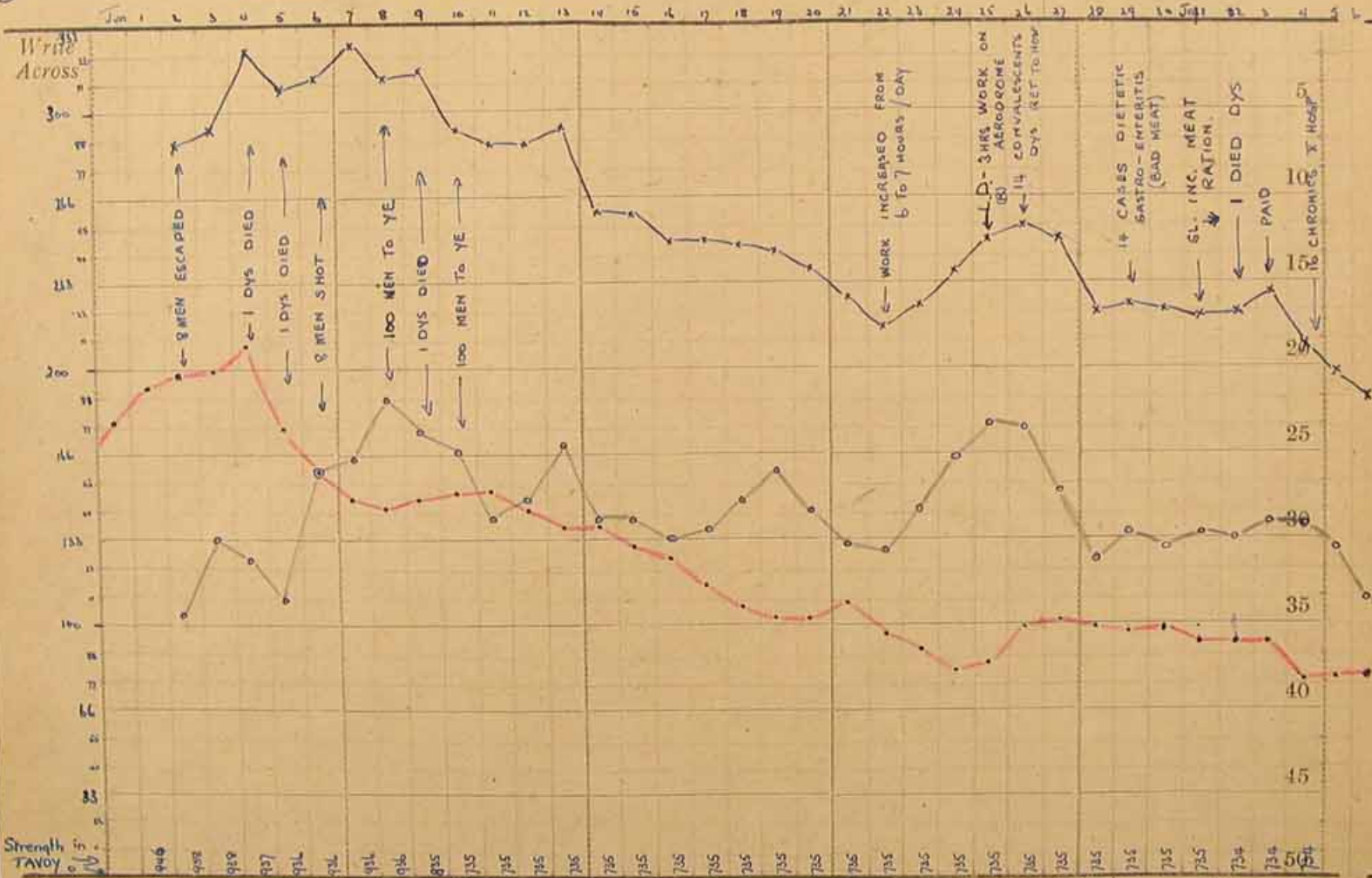
No. of
Groups:

TO:

TOTAL NOT WORKING (LD, N.D. HOSP)
 PATIENTS IN HOSPITAL
 TOTAL ON SICK PARADE

FROM:

(1)



System	P.I. Code or Cypher	Time of Receipt	Time of Despatch	Operator	P.O.O.W.	Date

S. 1320b.

For use in
Signal
Department
only

Originators Instructions:
(Indication of Priority,
Intercept Group, etc.)

Codress/Plaindress

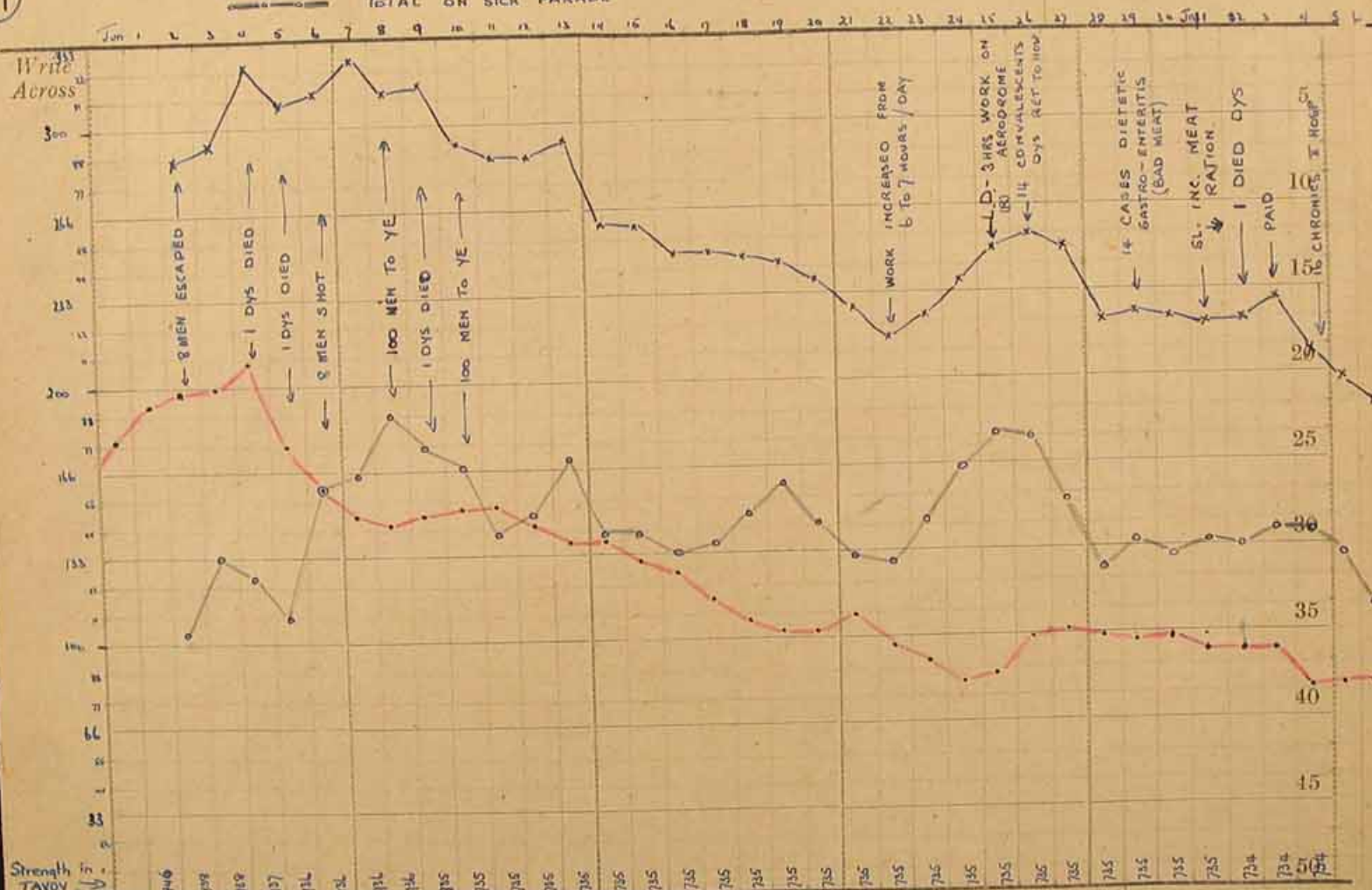
No. of
Groups:

TO:

TOTAL NOT WORKING (LD, ND, HOSP)
 PATIENTS IN HOSPITAL
 TOTAL ON SICK PARADE

FROM:

①



Strength in
TAVOY

System	P/L Code or Cypher	Time of Receipt	Time of Despatch	Operator	P.O.O.W.	Date
946						
947						
948						
949						
950						
951						
952						
953						
954						
955						
956						
957						
958						
959						
960						
961						
962						
963						
964						
965						
966						
967						
968						
969						
970						
971						
972						
973						
974						
975						
976						
977						
978						
979						
980						
981						
982						
983						
984						
985						
986						
987						
988						
989						
990						
991						
992						
993						
994						
995						
996						
997						
998						
999						
1000						

NAVAL MESSAGE.

Revised
December, 1935.

S. 1320b.

For use in
Signal
Department
only

Originators Instructions:
(Indication of Priority,
Intercept Group, etc.)

Codress/Plaindress

No. of
Groups:

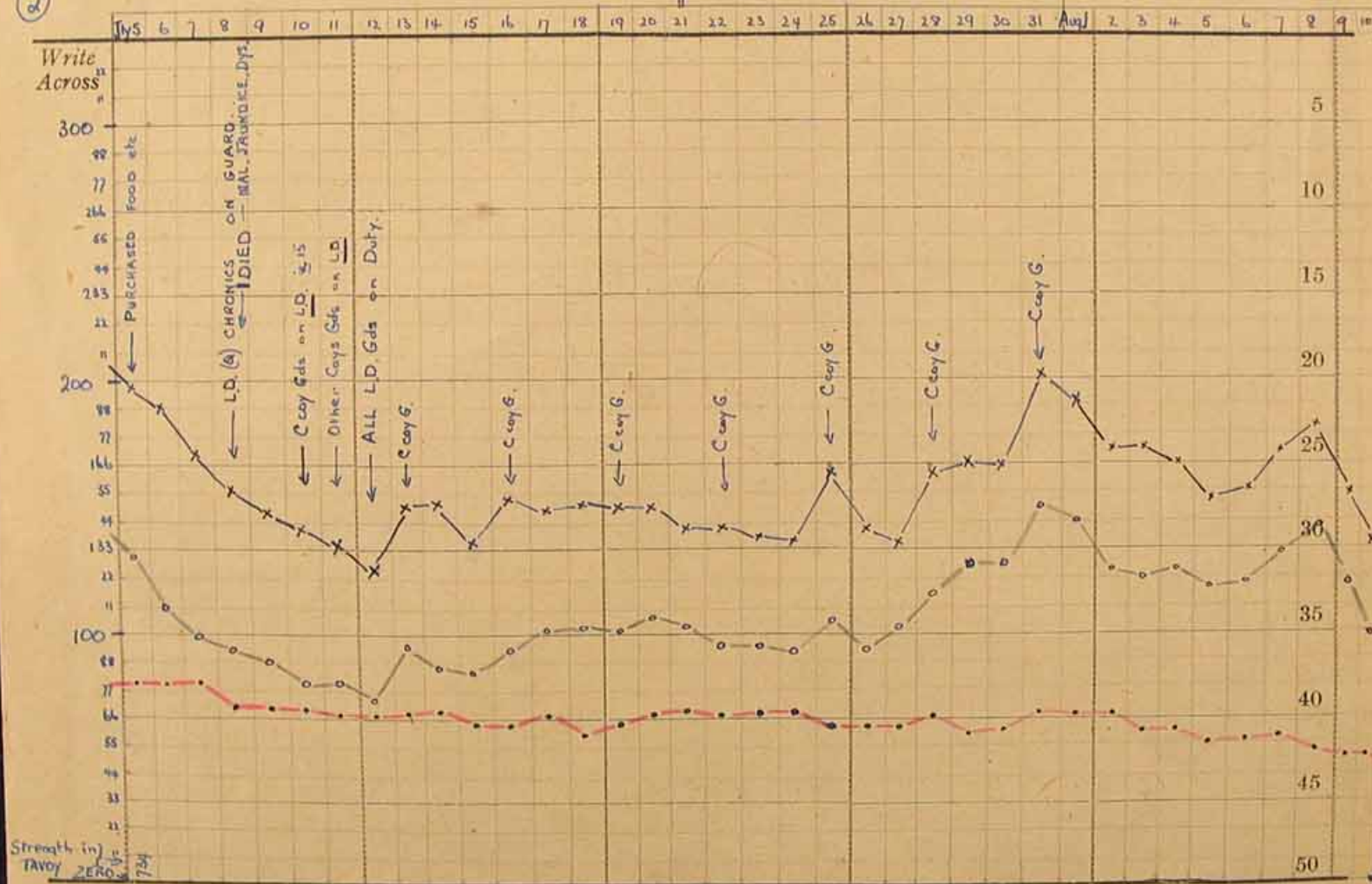
TO:

x-x-x TOTAL NOT WORKING (LD, NO, Hosp)

●-●-● PATIENTS IN HOSPITAL
○-○-○ TOTAL ON SICK PARADE

FROM:

②



Strength in TAVOY ZERO 724

System	P/L Code or Cypher	Time of		Operator	P.O.O.W.	Date
		Receipt	Despatch			