
ATTACHMENT P

Glare Impact of Glazed Link ETFE Roof
By Prism Façades



Prism Facades
ABN: 91 607 928 745
Level 2, 204 Clarence St
Sydney, NSW 2000
info@prismfacades.com.au
www.prismfacades.com.au

Adam O'Meara
Australian War Memorial
20 Treloar Crescent, Campbell ACT 2612

29th May 2020
Prism Reference: 20001-FALT-002(3)

Dear Adam,

AWM Anzac Hall: Façade Reflectivity

Prism Facades have been engaged to provide façade consultancy services for the Australian War Memorial on the proposed redevelopment of the new Anzac Hall Glazed Link.

The EPBC approval process has asked the project to respond to the following concern that materials used on the Anzac Hall will result in high levels of solar spectral reflectivity from new façade elements, in particular the ETFE roof.

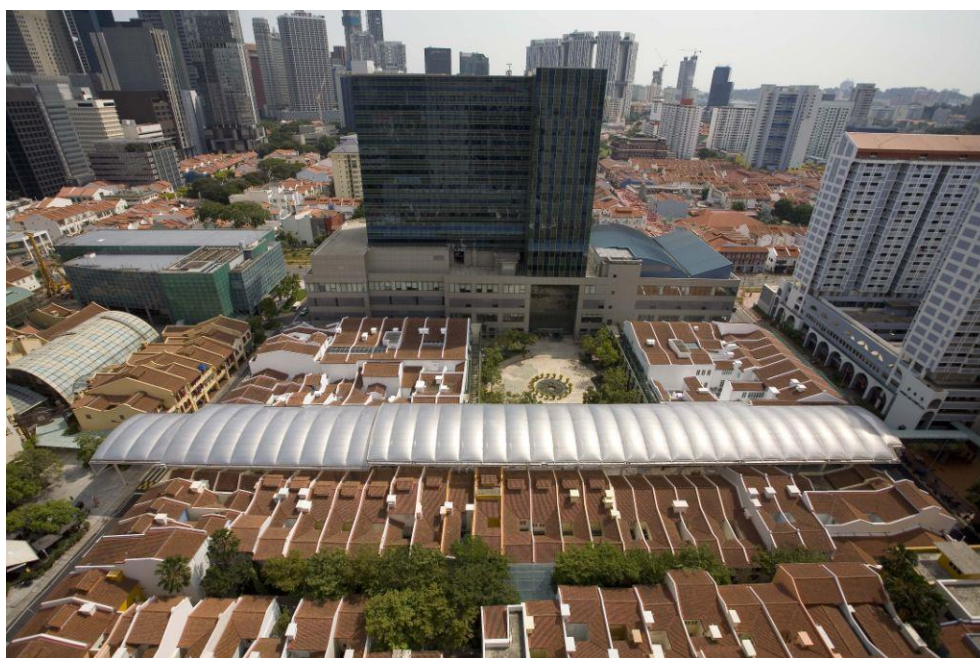
In relation to EPBC commentary, we advise the following:

It is common practice to limit external specular reflectivity of facade materials to 20%. This limit has been derived from planning controls from cities around the world including Sydney, Melbourne and Singapore, to reduce glare and manage stray solar reflections which may cause discomfort.

In an effort to meet the EPBC requirement we are using an ETFE roof membrane that has a matt appearance and has low external spectral reflectivity limited to a maximum of 10%, when conservatively measured on a flat ETFE pillow.

The following images were taken for the purposes of demonstrating the spectral reflectivity of an ETFE roof in Singapore (China Square project), where there are stringent spectral reflectivity limits on all building surfaces.





We trust that the above meets with your expectations, please don't hesitate to contact us if you should have any questions.

Yours sincerely,

A handwritten signature in black ink, appearing to read 'Troy Donovan'.

Troy Donovan
Principal | Façade Designer
+61 424 039 159
troy.donovan@prismfacades.com.au

Prism Facades
www.prismfacades.com.au